

my Taralay
impression



Artiste Bleg x Omart

**Make your inspiration
come true !**

Gerflor®

A modern office lounge area featuring a long, modular green sofa with a light wood base. The floor is covered in a dark blue carpet with a large, intricate floral pattern in shades of orange, red, and light green. A small, light wood coffee table sits in the center, holding a stack of papers and a rolled-up document. Several indoor plants, including a large green leafy plant and a Monstera, are placed around the room. Large windows in the background offer a view of a city skyline.

Beyond the norm

As you are unique and each of your projects represents a new challenge, Gerflor gives you the chance to stand out.

**One atmosphere, one style, one floor,
but several possibilities...**



3 Possibilities



1 - Colour

Set the tone of your project by recolouring the design of your choice in our Taralay Impression range*

* 32 designs available for colouring



2 - Collection

Leave a big impression on the atmosphere that you create thanks to our **unique collection of 50 designs** that reflect the major decorative trends that are popular today. All of our customisable designs: myfloorbygerflor.com



3 - Customisation

Enhance the visual identity of your company or that of your clients by printing a logo and/or your own designs.

My Taralay Impression

Make your inspiration come true !



Marco B.

Architect

"I like using designs inspired by nature,
it brings poetry to my architecture"

He likes to design **places**
with a **story to tell...**



... his creativity **is limitless !**

1 - Colour

The possibility to recolour 32 designs in the Taralay Impression range as you wish



1
Select a design from the Taralay Impression range



2
Change the colour scheme as you wish



3
Receive your floor sample within 10 days of acceptance of your inquiry by Gerflor



4
Receive and install your customised flooring; delivery lead time: 6 weeks from receipt of your order

"Envol" Design
Standard colour scheme



Customised colour 1



Customised colour 2



Minimum order: 200 m² (special pricing system)
If you have any questions (pricing, feasibility, technical information), do not hesitate to contact your sales representative

1 - Colour

32 Taralay Impression designs available



Nature Oak



Moon Island



Portobello



Noma



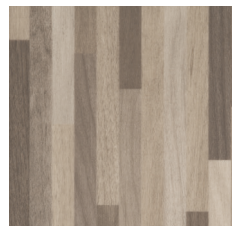
Habana 3D Blossom



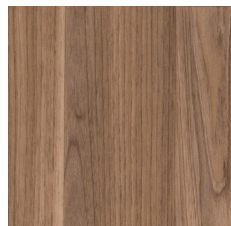
Habana 3D



Charme



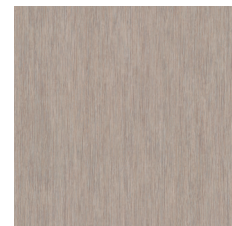
Raintree



Walnut



Sycamore



Infinity



Envol



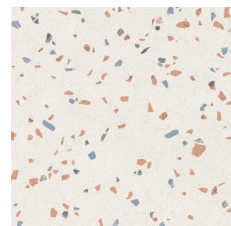
Rivau Nature



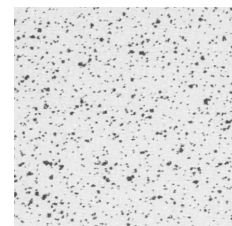
Rough



Cemento



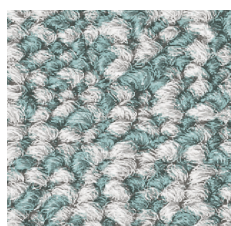
Terrazzo



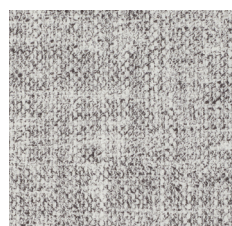
Metallic



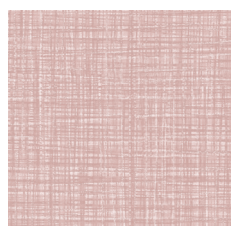
Chess



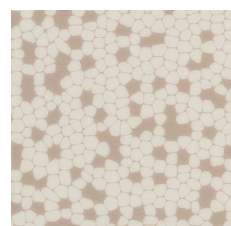
Pure Wool



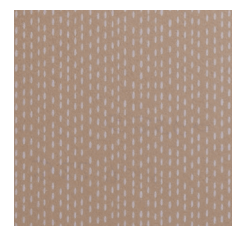
Gentlemen



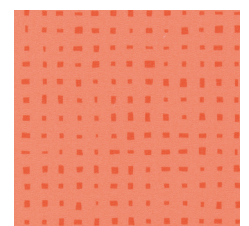
Finesse



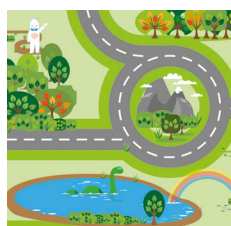
Nido



Rice



Kubes



Happy Road



Happy Form



Happy Number

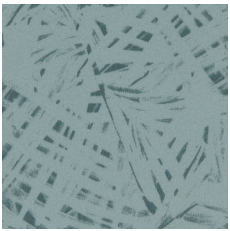


Uni Matt*

*The "Uni Matt" design has been adapted to digital printing and may differ slightly.



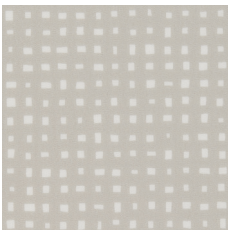
Wood Fusion



Jungle



Nest



Flipkube





Audrey B.

Primary school head teacher

There is a wide choice of designs and so many possibilities to create a unique atmosphere for our school

She always finds **a good motive...**



... to express her creativity!

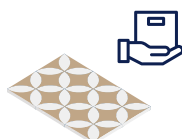
2 - Collection

The possibility to select from among 50 exclusive designs



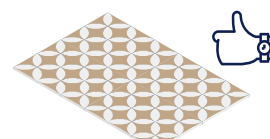
1

Draw inspiration from Gerflor's 50 exclusive designs and change, if you so wish, the design's colour scheme on www.myfloorbygerflor.com



2

Receive your floor sample within 10 days of acceptance of your inquiry by Gerflor



3

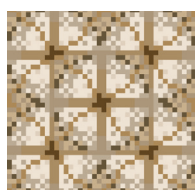
Receive and install your customised flooring; delivery lead time: 6 weeks from receipt of your order

Choose between 50 exclusive designs



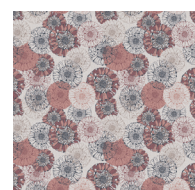
Wood

9 parquet designs, herringbone and various plank designs



Graphic

Six designs for infinite combinations in colour and size



Textile

12 designs in floral or geometrical themes



Mineral

9 designs including cement, terrazzo, marble, and other natural stones



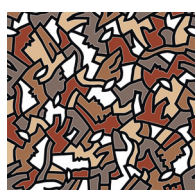
Graphic Tiles

3 designs inspired from cement tiles and oriental ceramics



Special

7 original designs in a variety of inspirations



Omart*

5 designs
An exclusive association with five artists. Meet them on page 38



Minimum order: 200 m² (special pricing system)

If you have any questions (pricing, feasibility, technical information), do not hesitate to contact your sales representative

WOOD



Variation Wood



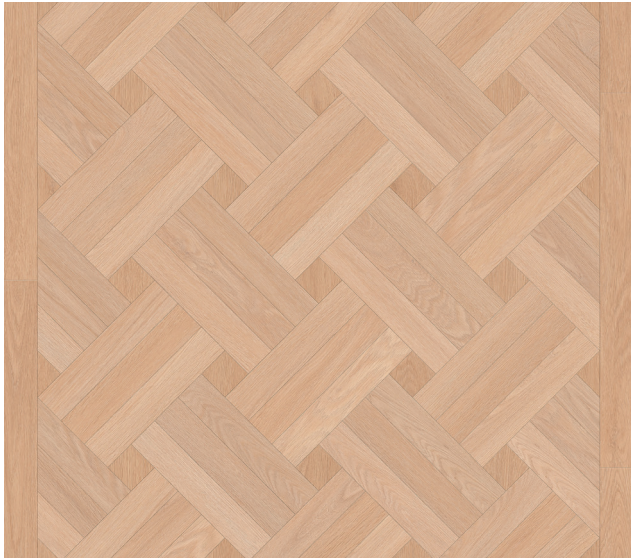


Square Wood



Australiano

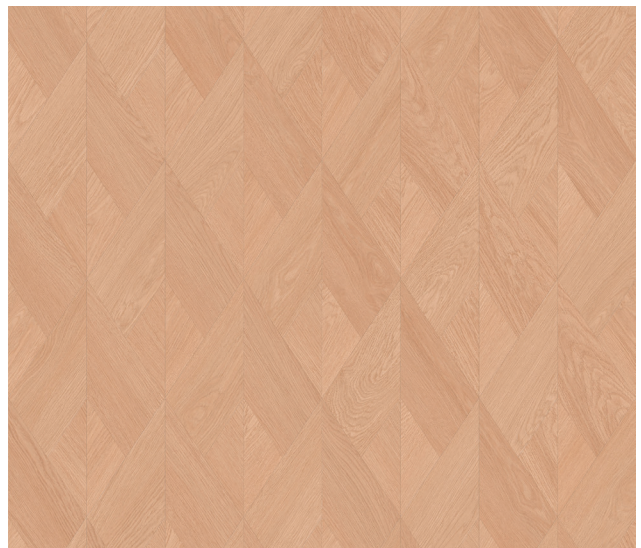




Parquet Wood



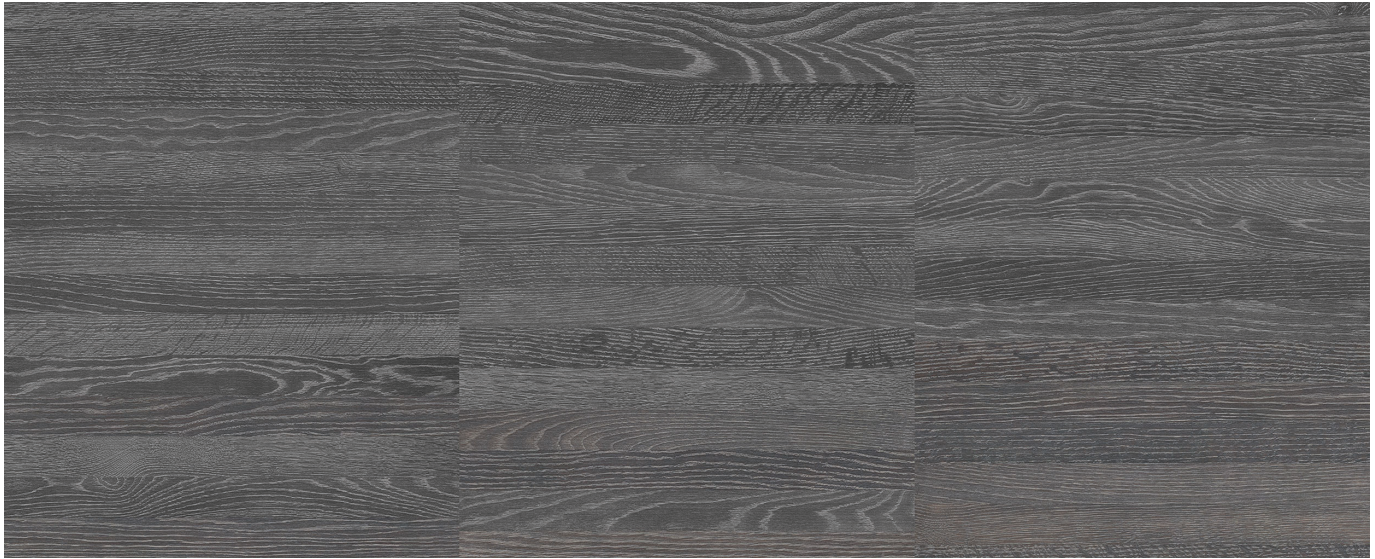
Geometric Wood





Pine Wood





Rovere





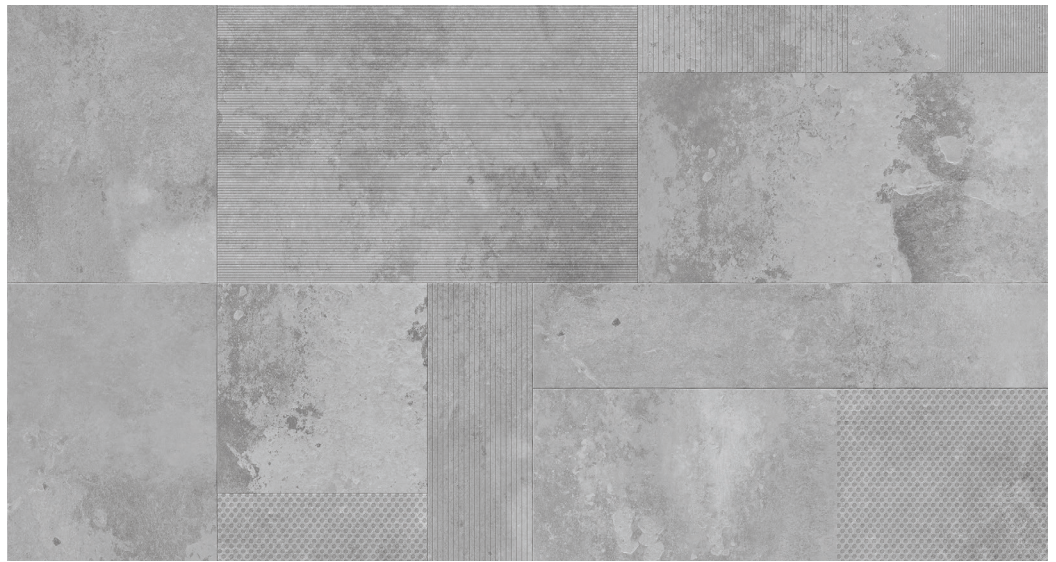
OSB



Arrow Wood



GENERAL



Underground





Carrare



Creativ Terrazzo





Stockholm Brick

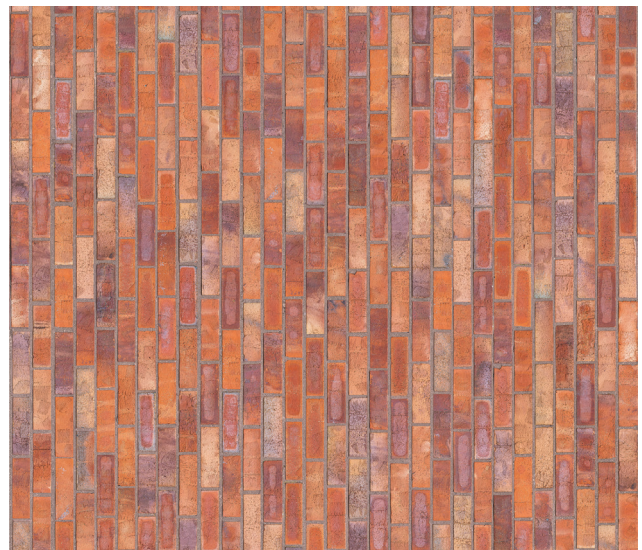




Stockholm Pave



London Brick



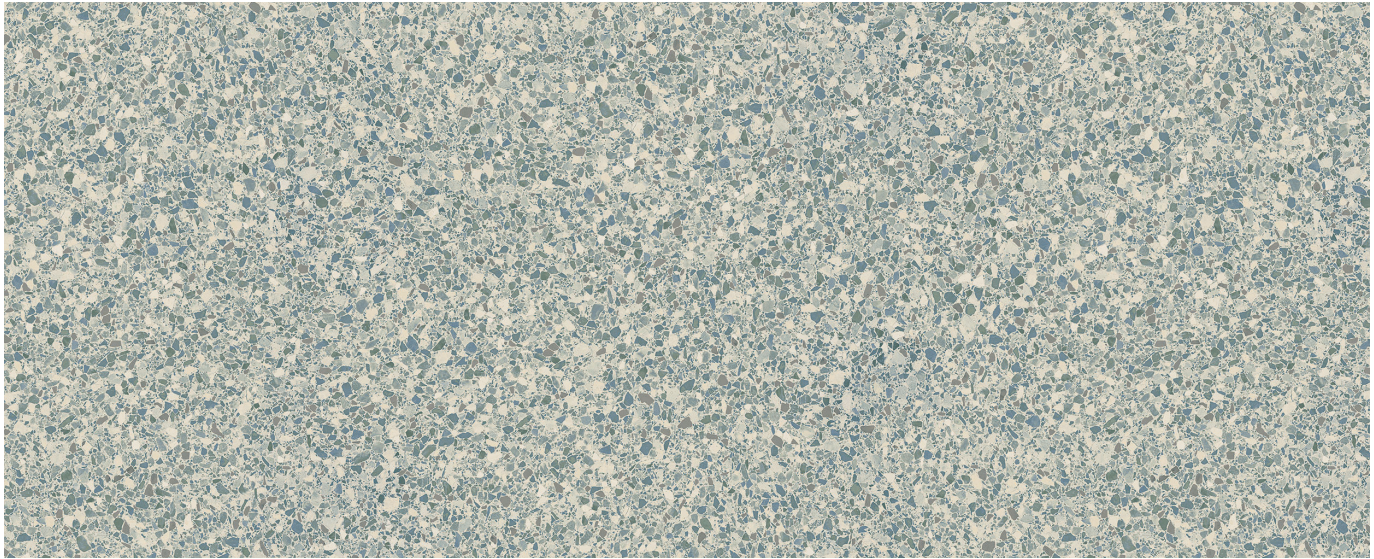


Dove Terrazzo



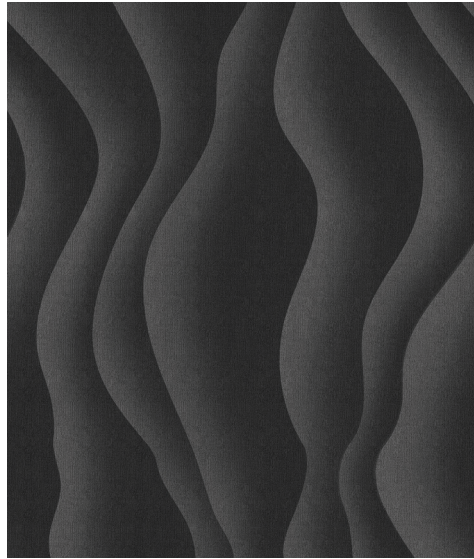
Natural Gravel





Pure Terrazzo



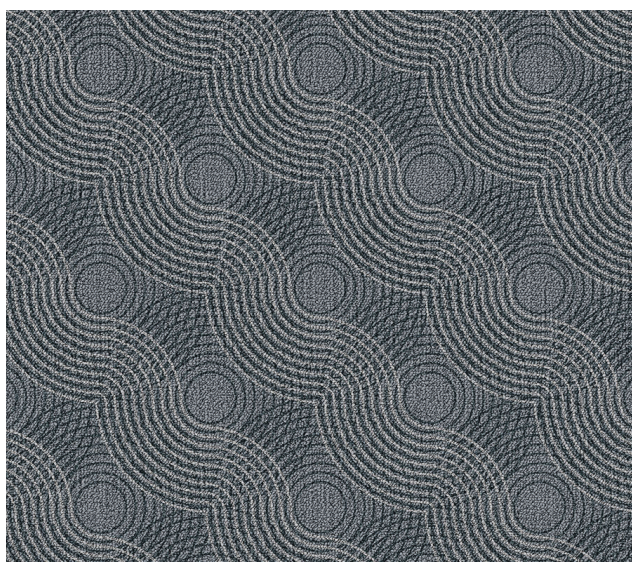


Shade Wool



Zebra Wool

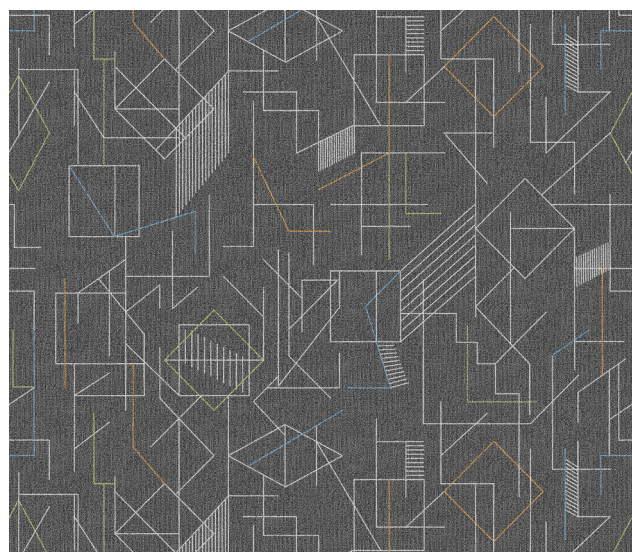




Flow



Geometric Wool





Peony



Roses





Leaves



Anemone





Eyelet

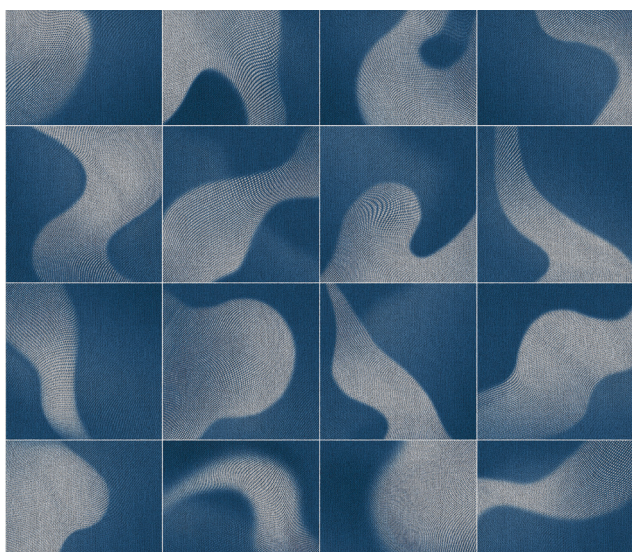


Iris





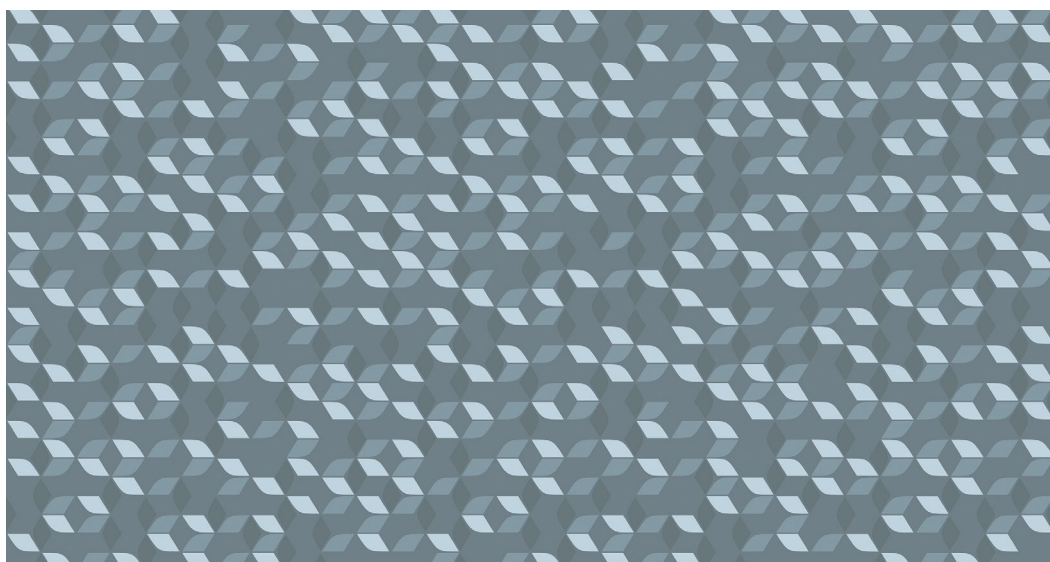
Matrix



Art Deco



GRAPHIC

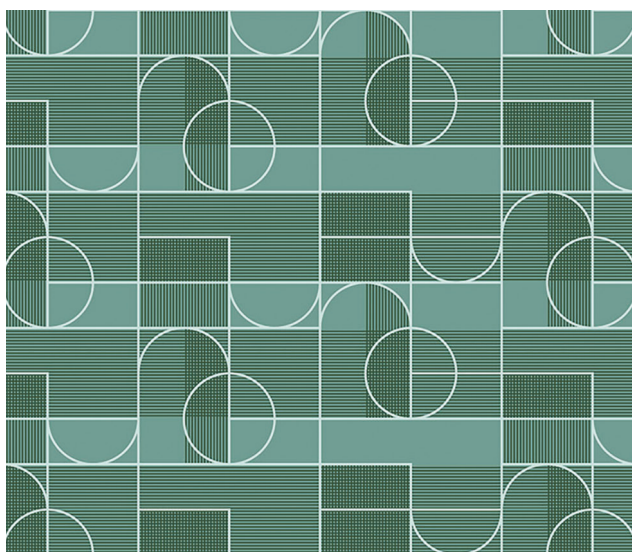


Flower Prisme



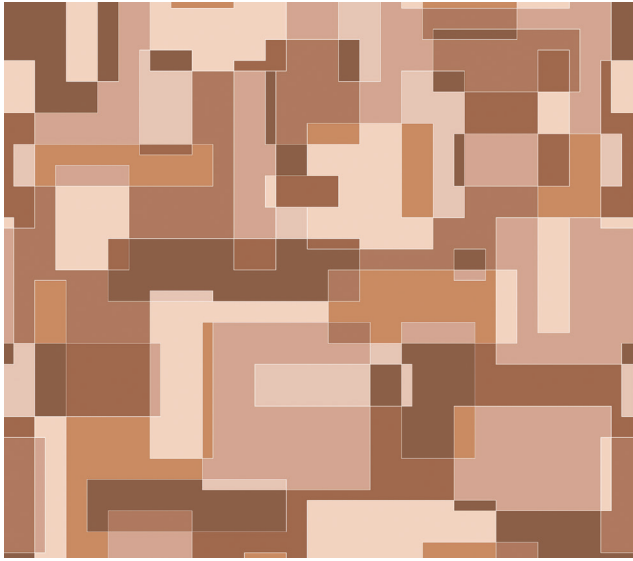


New Dada



Chromatics

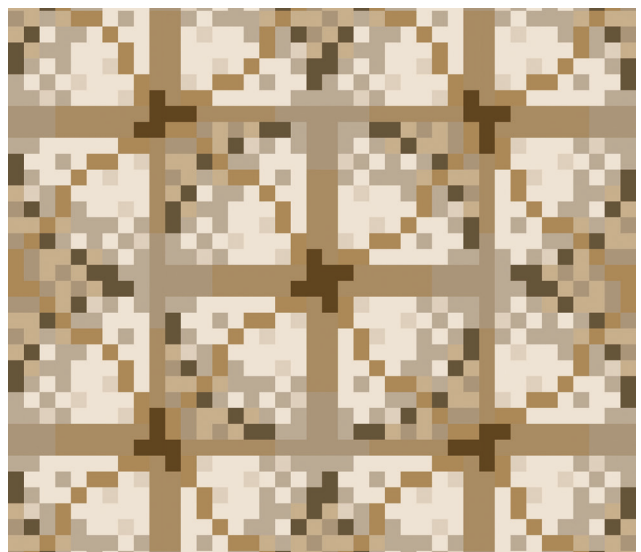




Creativ Block



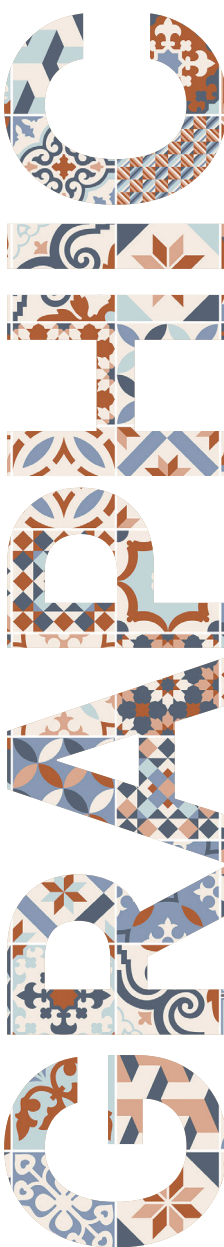
Pixels





Cartoon



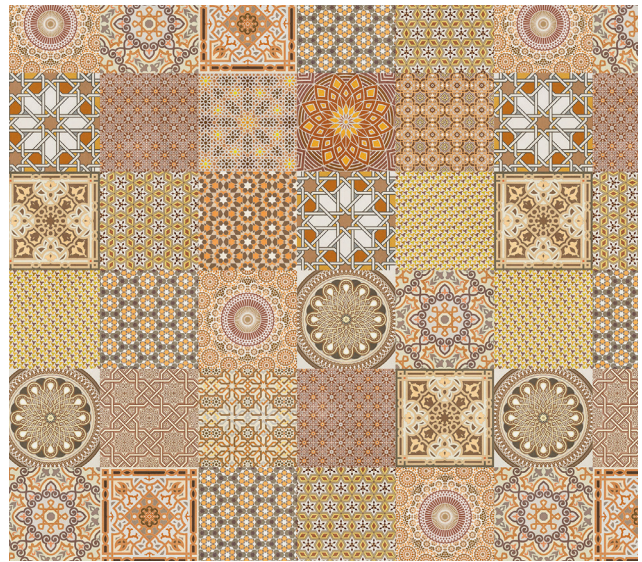
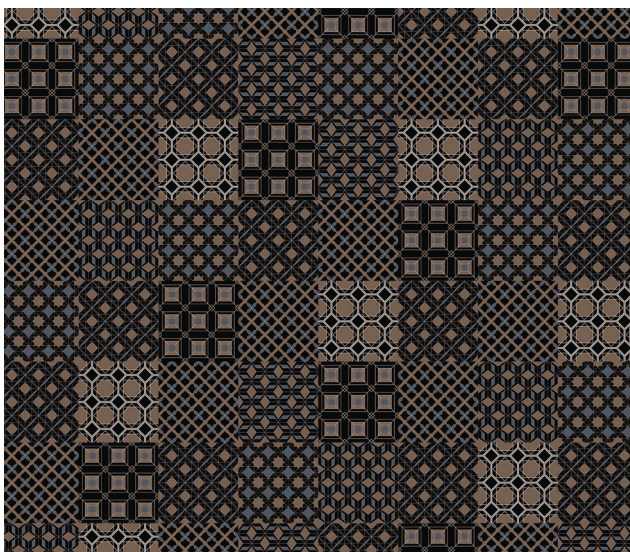


Carocim





Graphic Tile

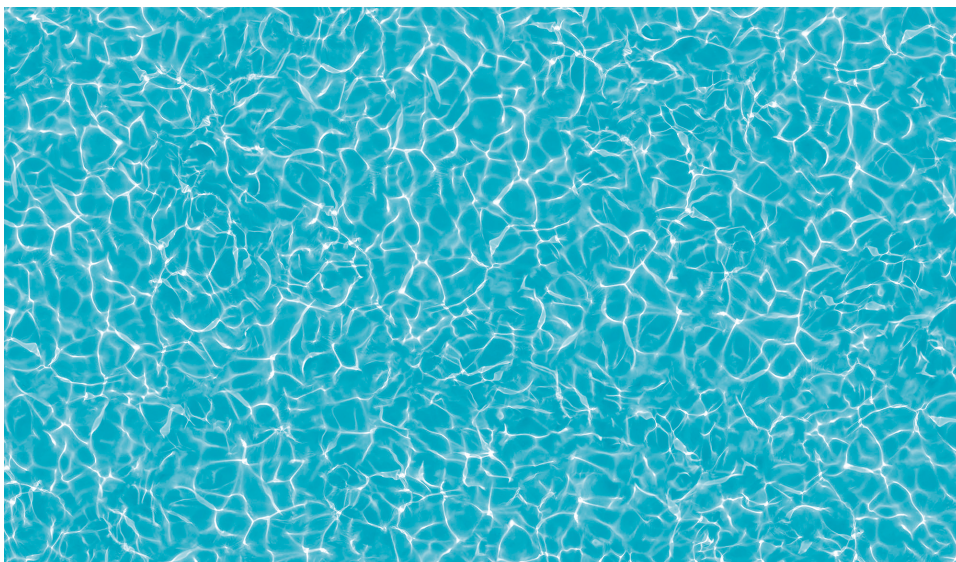


Arabic Tile





Sea Water



W
A
T
E
R
S



Buis



Spring Grass





Coffee

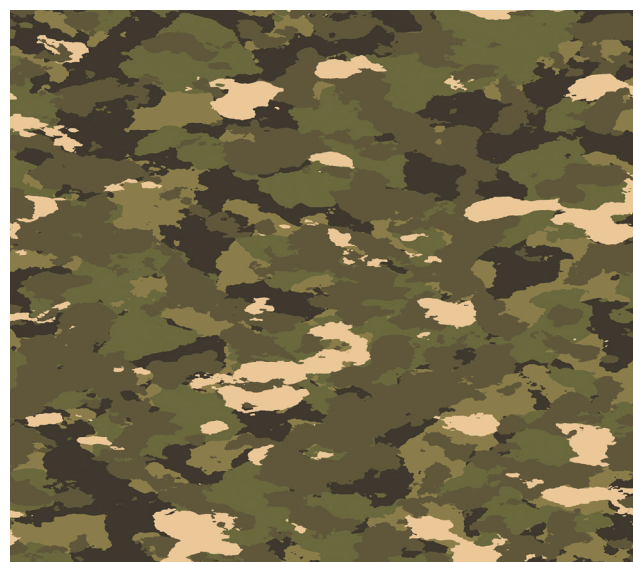
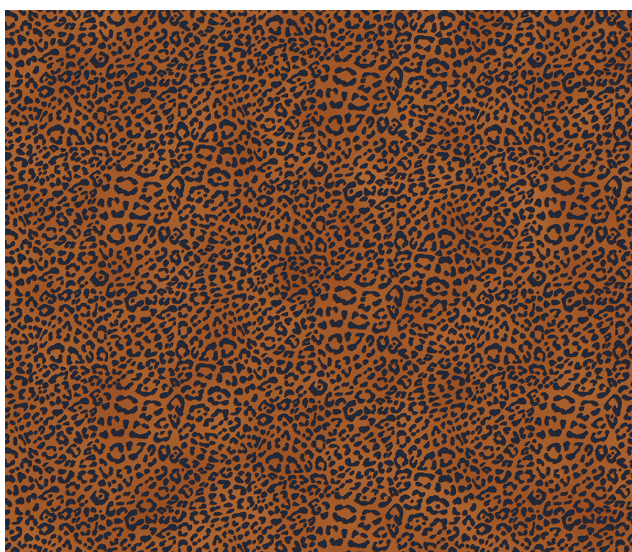


Leather Club





Leopard



Army



An invitation to walk on Art

Thanks to its digital printing line, Gerflor gives you the opportunity to recolor the collection's designs and opens the door to on-demand customization!

Discover 5 unprecedented designs designed by 5 artists (Bleg, Flatman, Gol3M, Osru, Polkie)

This fall, 5 artists took advantage of the infinite possibilities offered by digital printing to create custom-made floor coverings. With no limit to their creativity, the only limit being their imagination, thanks to Gerflor's My Taralay.

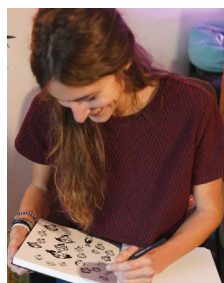
This unconventional project allows artists to visit the world of design and Gerflor to benefit from these raw creative juices. An unprecedented experience that breaks the rules. In effect, this opportunity to customize floor coverings opens new perspectives and opened up an exceptional playground for these 5 young artists.

These 5 new exclusive designs have now been added to the My Taralay library and are currently available in addition to the Collection.

FLATMAN



Artist Flatman x Omart



Sensitivity in aquatic environments

Flatman is passionate about culture and nature. During her training at Emile Cohl (School of Art and Design in Lyon), she learnt to master a graphic language by mixing her creations with various infographic techniques: we are talking about digital art.

Flatman began by questioning the role of humans in their environment. Without using anything other than water and sea-foam, she focuses on the characters, and brings them a kind of serenity.

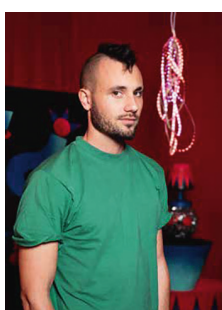
In her My Taralay, bathers blend into the sea in an interplay of shapes and counter-shapes created by water and bodies.



GOL3M



Artist Gol3m x Omart



Mystical panoply

Gol3m, is a multi-faceted painter.

It was Joann Sfaar who influenced Gol3m to start creating comics, illustrations. After studying at Émile Cohl (School of Art

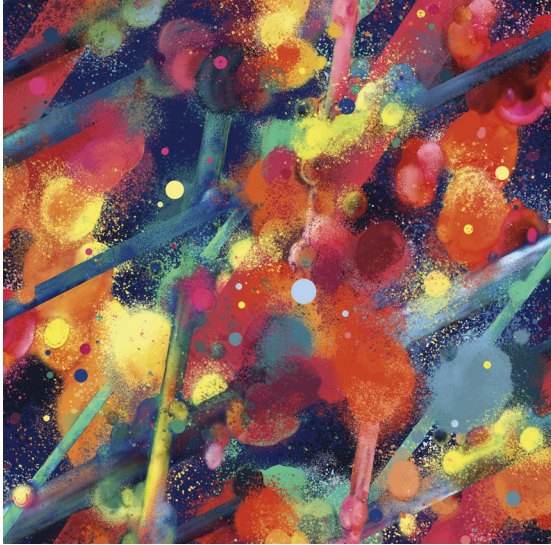
and Design in Lyon), his first commissions were wall paintings.

Fantastical creatures evolving in a luminous atmosphere are born from his hand.

His My Taralay features astral art deco figures.

Whether they are carnival allegories or characters, the masks are suspended from this celestial vault in mineral colors.

OSRU



Artist Osru x Omart



'Ground-to-Air'

Osru evolves through the art of graffiti and goes from wall to canvas, exploring different techniques: spray, acrylic, watercolor, wood engraving etc.

His My Taralay presents guidelines that cross a multicolored space.

Each intersection causes an explosion of colored bubbles that interact with each other like an effervescent galaxy.



POLKIE



Quirky graphic design

Trained in humanities and then in spatial design, Polkie was entirely dedicated to developing his artistic approach in 2019, having resided in Orange Garden in China. Polkie is all about a bunch of little

monsters with their own codes, worlds and stories in which these characters interact.

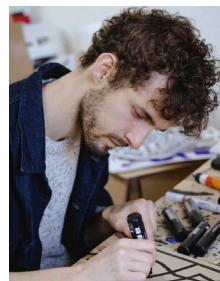
A bit of naivety, poetry and humor is to be found in his My Taralay



Artist Polkie x Omart



BLEG



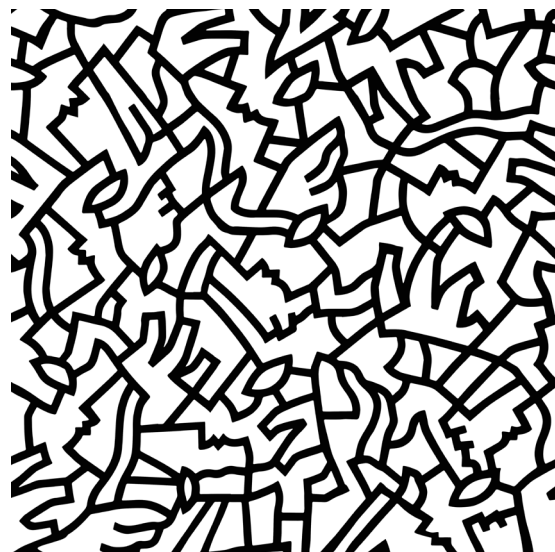
Short stories & visual poems

A drawing artist, painter and muralist who draws his thick and uniform lines on a multitude of surfaces. Heavily influenced by modern painters of the twentieth century as well as surrealism and street art, Bleg

likes to let loose and just go wherever his work takes him. In search of spontaneity and «artistic accidents», his work is characterized by a search for perpetual simplicity.

In his My Taralay, the artist sought to capture the movement of a noisy and confused crowd.

A design that is somewhere between figurative and abstract that is very rich in symbolism.



Artist Bleg x Omart



Isabelle L.

Art gallery manager

"I love to be able to create and match my gallery's floor with the work on show. Visitors are fully immersed in the artist's world!"

Her motto: "An exhibition that is **exceptional...**



... should have a floor that is also **exceptional**"

3 - Customisation

the possibility to make your floor unique



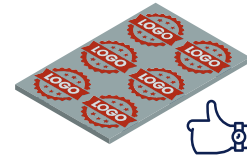
1
Send us your own file in accordance with the process described in our **specifications**



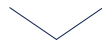
2
Approval by our technical team



3
Receive your floor sample within 10 days and before all of your floor is made



4
Receive and install your customised flooring; delivery lead time: 6 weeks from receipt of your order



File formats accepted



Files free from copyright only

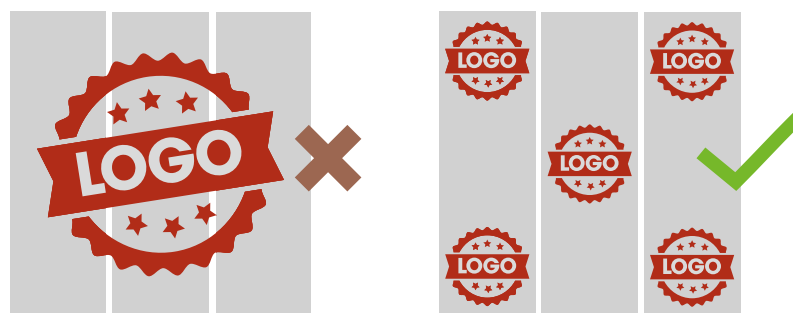


300 DPI resolution



RAL, Pantone and NCS colour reference

To enhance the visual identity of your company or that of your clients, you can have your logo printed across the width of the roll.



- No metallic ink
- No printing on a plain background
- Design only across the width (2 m)
- No continuity of designs over several rolls



If you have any questions (pricing, feasibility, technical information), do not hesitate to contact your sales representative

3 - Customisation

Digital printing opens new and audacious possibilities

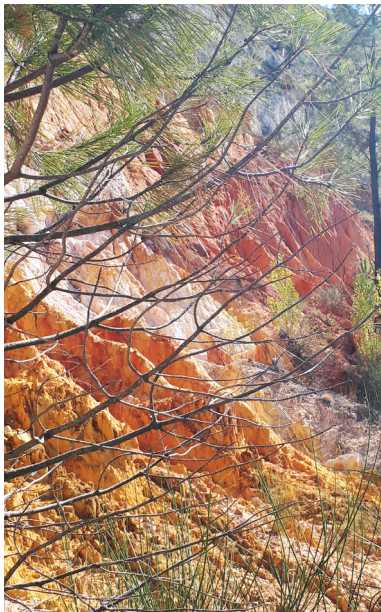
Focus on the exhibition “On the trail of the Sioux”

In 2022 Gerflor created a unique floor design for an exhibition at the Musée des Confluences in Lyon on the theme of the Sioux.

Design process



In this project Gerflor designers went to the Roussillon ochre trail and used the incredible colour palette that they found there. They took samples of the sand and matched the original colours of the West American native Indians.



Printing process



Finalisation of the entire design



An original design made to measure to enhance the experience of the Sioux environment.

Customisation



My Taralay Impression benefits

My Taralay Impression has the same product construction and characteristics as Taralay Impression



Extreme stain resistance, easy maintenance

Protectsol® 2 surface treatment (patented technology by Gerflor)



High traffic resistance, long-lasting appearance



Made in Europe



The best acoustic / indentation performance on the market

COMPACT : 0,03 mm / 8 dB
ACOUSTIC : 0,08 mm / 19 dB



Eco-responsible solution

100 % recyclable
Best in class for indoor air quality (TVOC < 10 microgram/m³ after 28 days)



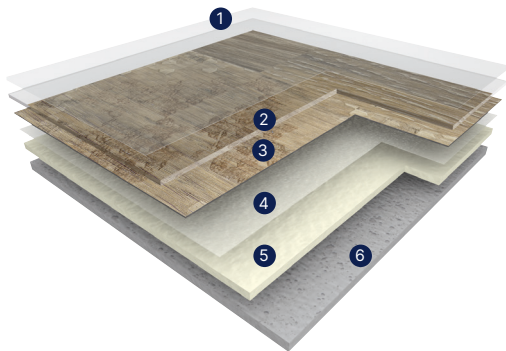
Taralay Impression **hop**

Adhesive free



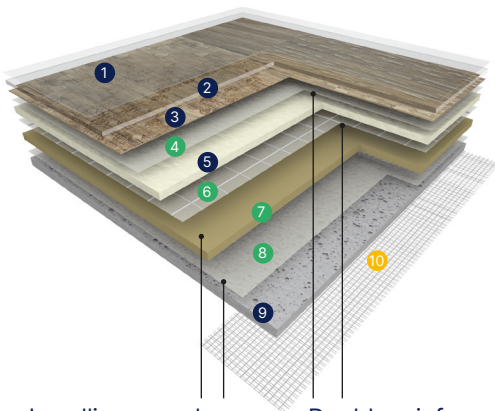
2 technical solutions

Taralay Impression - Glue-down installation



- ① Protocolsol® 2 extra-matt surface treatment
 - ② Transparent wear layer
 - ③ Design
 - ④ Fibreglass
 - ⑤ Compact interlayer
 - ⑥ High density foam (acoustic version)
- Available in a compact 8 dB or an acoustic 19 dB version

Taralay Impression **hop** - Looselay





Levelling complex calendered layer + technical underlay = **looselay**

Double reinforcement fibreglass + glass fiber grid = **reinforced stability**

- ① Protocolsol® 2 extra-matt surface treatment
- ② Transparent wear layer
- ③ Design
- ④ Fibreglass
- ⑤ Compact interlayer
- ⑥ Glass fiber grid
- ⑦ Calendered layer with recycled content
- ⑧ Technical underlay
- ⑨ High density foam (acoustic version)
- ⑩ **hop** holding tape

Available in a compact 8 dB or an acoustic 19 dB version

Technical data

			Taralay Impression Acoustic	Taralay Impression Compact	Taralay Impression hcp Acoustic	Taralay Impression hcp Compact
Description						
Total thickness	EN ISO 24346	mm	3.35	2.00	4.35	2.30
	ASTM F386-02	inch	0.13"	0.08"	0.17"	0.09"
Thickness of wearlayer	EN ISO 24340	mm	0.65	0.70	0.70	0.70
	ASTM F410-02	inch	0.028"	0.028"	0.028"	0.028"
Weight	EN ISO 23997	g/m ²	2825	2635	3670	3125
	-	lbs/sq.ft	6.23	5.81	8.09	7.05
Width/length of sheet	EN ISO 24341	cm / lm	200 / 25	200 / 25	200 / 20	200 / 20
	-	feet - inch	6'6" / 82'	6'6" / 82'	6'6" / 65'7"	6'6" / 65'7"
Classification						
Norm/product specification	-	-	EN ISO 11638	EN ISO 10582	EN ISO 11638	EN ISO 10582
European classification	EN ISO 10874	class	34 - 42	34 - 43	34 - 42	34 - 43
Fire rating	EN 13501-1	class	Bfl-s1	Bfl-s1	Bfl-s1	Bfl-s1
Static electrical propensity	EN 1815	kV	< 2	< 2	< 2	< 2
Slip resistance wet: ramp test with oil	EN 16165 app B	classe	R10	R10	R10	R10
Performances						
Wear resistance	EN 660.2	mm ³	≤ 2.0	≤ 2.0	≤ 2.0	≤ 2.0
Wear group	QB 30	group	T	T	T	T
Type binder content	EN ISO 10582	type	-	I	I	I
Dimensional stability (requirement)	EN ISO 23999	%	≤ 0.40	≤ 0.40	≤ 0.40	≤ 0.40
Dimensional stability (measured value)	-	%	0,08	0,08	0,03	0,03
Residual indentation (requirement)	EN ISO 24343-1	mm	≤ 0.20	≤ 0.10	≤ 0.20	≤ 0.10
Residual indentation (average measured value)	-	mm	≈ 0.08	≈ 0.03	≈ 0.08	≈ 0.03
Impact sound insulation	EN ISO 717-2	dB	19	8	19	8
Castor chair test (type H)	ISO 4918	-	OK	OK	OK	OK
Thermal conductivity	EN ISO 10456	W/(m.K)	0.25	0.25	0.25	0.25
Colour fastness	EN 20 105 - B02	degree	≥ 6	≥ 6	≥ 6	≥ 6
Surface treatment	-	-	PROTECSOL® 2	PROTECSOL® 2	PROTECSOL® 2	PROTECSOL® 2
Chemical products resistance ⁽¹⁾	EN ISO 26987	-	OK	OK	OK	OK
Anti-bacterial activity (E. coli - S. aureus - MRSA) ⁽²⁾	ISO 22196	-	> 99% inhibits growth	> 99% inhibits growth	> 99% inhibits growth	> 99% inhibits growth
Antiviral activity (human coronavirus) after 2h ⁽²⁾	ISO 21702	-	> 99.7% virucidal activity	> 99.7% virucidal activity	> 99.7% virucidal activity	> 99.7% virucidal activity
Environment / Indoor Quality Air						
TVOC after 28 days	ISO 16000-6	microgram/m ³	< 10	< 10	< 10	< 10
Certification			Floorscore®	Floorscore®	Floorscore®	Floorscore®
CE marking						
	EN 14041	-				

(1) Regarding the resistance to chemicals, please download the corresponding leaflet from our website.

(2) The implementation of an effective cleaning regime is the most important defence against infection.

Product description and technical data sheets on gerflor.com

Installation and Maintenance Guidelines, Complementary ranges available on our Gerflor website.








Rubber leaves indelible stains on vinyl floorings: do not use mats with rubber backing and replace tubular furniture feet with those made of PVC or polyamide. Place mats of sufficient length at entrances to reduce outside sources of dirt.

IMPORTANT: The information contained in this document is valid from 01/07/2023 and is subject to change at any time without notice. In the context of constantly changing technology, our customers are responsible, prior to any use, for checking with us that this document is the version in force.



we care / we act our commitments for 2030

 <p>climate</p> <p>-30% CO₂ scopes 1, 2, 3 in tons eq. CO₂, vs 2019 Science Based Targets⁽¹⁾</p>	 <p>resources</p> <p>75% biobased, mineral and recycled content⁽²⁾</p> <p>30% recycled content⁽³⁾</p>	 <p>circularity</p> <p>65 000 tons annual volume recycled⁽⁴⁾</p> <p>45% looselay⁽⁵⁾</p>	 <p>health & well-being</p> <p>100% products better than Indoor Air Quality standards⁽⁶⁾</p> <p>95% sales covered by EPD⁽⁷⁾</p>	 <p>people</p> <p>30% women⁽⁸⁾</p> <p>40% internal mobility⁽⁹⁾</p> <p>Towards 0 accident⁽¹⁰⁾</p>
--	---	---	---	--



More details: 1. Scopes 1, 2 & 3, in absolute value, market-based. Trajectory approved by SBTi (Science Based Targets Initiative). 2. Origin of raw materials for the entire Floor & Wall portfolio, on average, by weight; including 15% virgin salt, a primary element in vinyl manufacturing. Compared to 71% in 2024. 3. Average content in the Floor & Wall vinyl portfolio, by weight. Compared to 21% in 2024. 4. Recycled in our factories and recycling units. Compared to 59 040 tons in 2024. 5. % of Floor activity with non-glued products, easy to remove, easy to re-use. Compared to 40% in 2024. 6. 100% of vinyl and linoleum sold to the building market below 100 micrograms/m³ (TVOC 28 days). 7. % of Floor & Wall activity covered by Environmental Product Declarations (EPD). Compared to 44% in 2024. 8. % women in our global workforce and among our managers. Compared to respectively 26% and 27% in 2024. 9. % job openings filled with internal hires worldwide. Compared to 25% in 2024. 10. Towards 0 accident: Lost time accident per million hours worked: below 3 vs 8,9 in 2024, for Gerflor employees worldwide.