



EDGES AND FRAMES



▶ DECOCHOC / DECOSMIC PANELS - BENDS INTO L AND U SHAPES -

Applications

Provides protection for door edges and simple frames edges against frequent impact from trolleys (corridors and entrances to healthcare facilities, laboratories...). Lateral edges are exposed to impacts from trolleys, beds... and below edges to water leaks in the door. U-bend is perfect for damp rooms such as bathrooms, sanitary arrangements, central kitchens...

Description

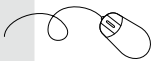
- Model: Cut-to-size protection and covering Decochoc or Decosmic panel with bends into L and U shapes*
- Thickness: 2 mm
- Material: Antibacterial and Bs2d0 fire-rated PVC, solid colour
- Surface finish: lightly textured
- Fixing: adhesive bonding with Gerflor acrylic glue or Gerflor universal mastic glue
- Colours: 32 standard for Decochoc and 3 for Decosmic

Specification

- Description: door protection and covering panel with bends into L or U for edge or frame protection (Decochoc or Decosmic as manufactured by Gerflor) from antibacterial PVC achieving Bs2d0 fire rating with solid colour. Lightly textured surface finish, 2 mm thick.
- Environment: No heavy metals and no substance potentially subjected to any REACH restriction are used in

its manufacture, nor PBT/PBA. The calcium-zinc thermal stabilisation process is used. The emission level of volatile substance in inside air has been tested according to ISO 16000-6 and is under 15µg/m³. 100% of the product are recyclable.

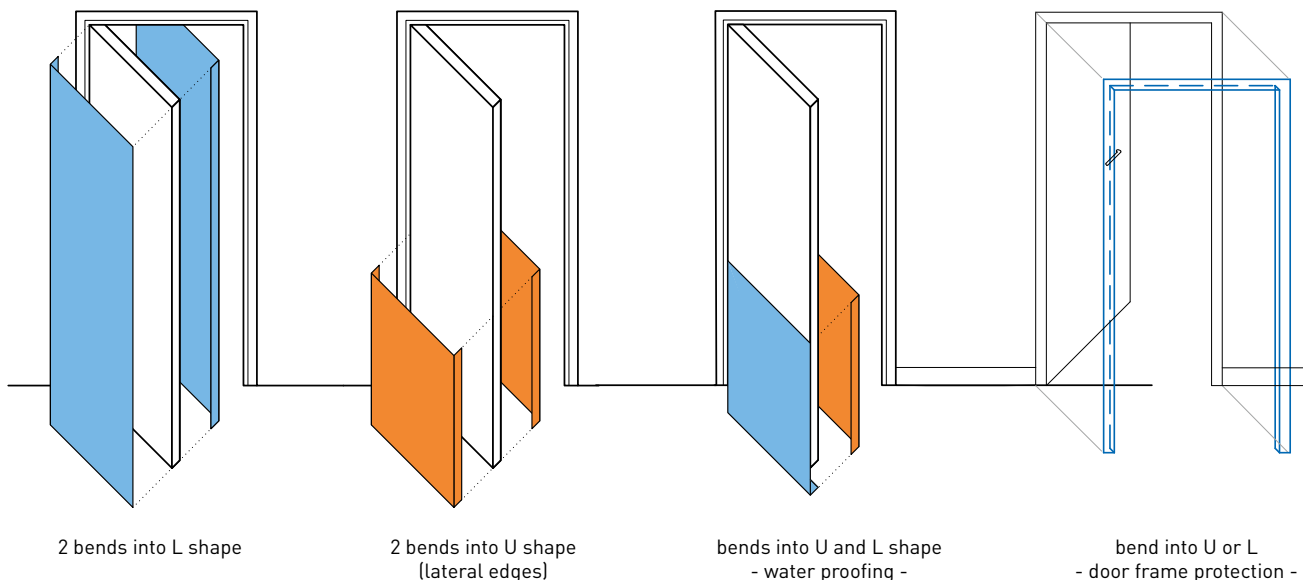
- Colour: Selected by architects from manufacturer's standard range
- Installation method: Glue as per manufacturer's instructions.



Specification can be downloaded from our website www.gerflor.com

*For bend of other panels: consult us

Decochoc 32 colours



2 bends into L shape

2 bends into U shape
(lateral edges)

bends into U and L shape
- water proofing -

bend into U or L
- door frame protection -

▶ THERMOFORMING OF DECOCHOC AND DECOSMIC PANELS*

Applications

For complex door frames which cannot be protected by L or U bends (corridors in hospitals, clinics, nursing homes...) and for rounds pillars.

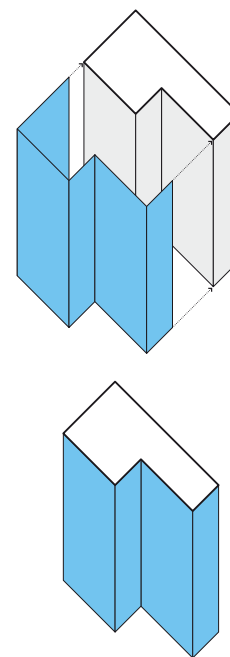
Description

- Model: Cut-to-size Decochoc or Decosmic protection and covering panels with thermoforming according to template provided*
- Thickness: 2 mm
- Material: Antibacterial and Bs2d0 fire-rated PVC, solid colour
- Surface finish: lightly textured
- Fixing: adhesive bonding with Gerflor acrylic glue or Gerflor universal mastic glue
- Colours: 32 standard for Decochoc and 3 for Decosmic

*For thermoforming of other panels: consult us

Specification

- Description: Cut to size and thermoformed protection and covering panel (Decochoc or Decosmic as manufactured by Gerflor) from antibacterial PVC achieving Bs2d0 fire rating with solid colour. Lightly textured surface finish, 2 mm thick.
- The level required for biocleaning should be validated for very high infectious risk areas such as operating theatres (sector 4) according to the Pasteur Institute of Lille (France). The chemical and mark resistance should have been proved on the usual cleaning products according to ISO 26987. The ease of nuclear decontamination according to ISO 8690 should be excellent.
- Environment: No heavy metals and no substance potentially subjected to any REACH restriction are used in its manufacture, nor PBT/PBA. The calcium-zinc thermal stabilisation process is used. The emission level of volatile substance in inside air has been tested according to ISO 16000-6 and is under $15\mu\text{g}/\text{m}^3$. 100% of the product are recyclable.
- Colour: selected by architects from manufacturer's standard range.
- Installation sequence: Glue as per manufacturer's instructions.



Thermoforming
Complex frame
protection



Specification can be downloaded from our website www.gerflor.com